





Jada
Company
First Line Of Defense

OUR COMPANY

For more than forty-four years, AL JADA has manufactured and supplied the market with metal doors for commercial, industrial, and special applications in building throughout the world, by means of sophisticated facilities using the CAM (computerized plant and machinery) for production.

Since the year 1993, AL JADA, comprised of a management team with a wealth of experience in the field has established a manufacturing operation supplying the market with all kinds of metal door sets (fire rated doors, sound proof doors, security doors, fire rated rolling shutters, etc.) that are compliant with international technical standards and under license from AL JADA.

Offering design, manufacture and installation services, using modern manufacturing techniques and adopting high quality standards for manufacturing and production planning, AL JADA can handle projects of all types and sizes.

Continuous product development and an exhaustive performance-testing program enable AL JADA to offer a wide range of certified door sets. Over the years, AL JADA has developed many innovative product ranges for specific market sectors including education, health and leisure.

AL JADA installation service includes on-site survey, measurements and installation. This helps to maintain quality from commissioning to manufacture and ensures that there are no issues with certification.

OUR MISSION

- Continue to be the specialist in fire rated and safety doors.
- Become a regional construction company.
- To be known through the satisfaction of our clients.

OUR VISION

Become an internationally recognized company, supplier of high quality metal constructions. We will continue to innovate and improve our doors and develop the skills of our employees. The goal is produce cost efficient a high quality product for a growing group of satisfied customers. For that we focus on having a state of the art product facility with highly motivated and educated employees.



THE FACTORY

Jada
Company
First Line Of Defense

OUR PRODUCTS

منتجاتنا

Jada
Company
First Line Of Defense



Steel Single Door

Fire-rated hollow metal doors



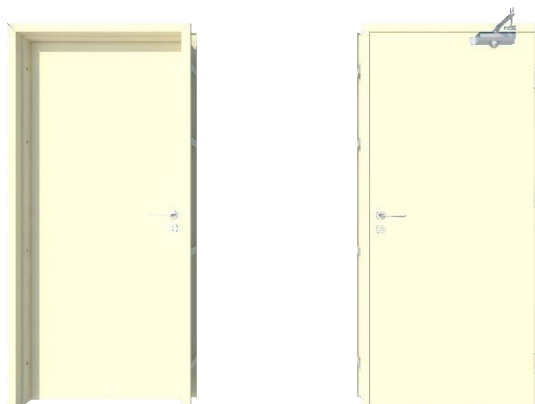
Single Exit Steel Door



Single Push Pull Steel Door



Single Installation Steel Door



Up to 4 hours (British Standard Part 2, BS 476, Parts 20 & 22.
Building Regulations 2000-Fire Safety Part B. "30-60-90-120-
241min") - (American Standard ANSI / ASTM / NFPA 80-
1999, NFPA 252-1995, UL 10B, UL 10C, "30-60-90-120-
180min")
UBC 7-2 and IBC IFC IEC

Zinc-Based Coatings on Steel Sheet
ASTM Test Method A754/A754M (G90 (0.90 oz/ft²) = 2275 (275 g/m²)) triple
spot test (TST) average minimum of - 0.05 to 0.25 ounces



Standard Fire-Resistance Rating



Up to 4 hours (British Standard Part 2, BS 476,
Parts 20 & 22.

Building Regulations 2000-Fire Safety Part B.
"30-60-90-120-241min") - (American Standard
ANSI / ASTM / NFPA 80-1999, NFPA 252-1995,
UL 10B, UL 10C, "30-60-90-120-180min")
UBC 7-2 and IBC IFC IEC

Zinc-Based Coatings on Steel Sheet

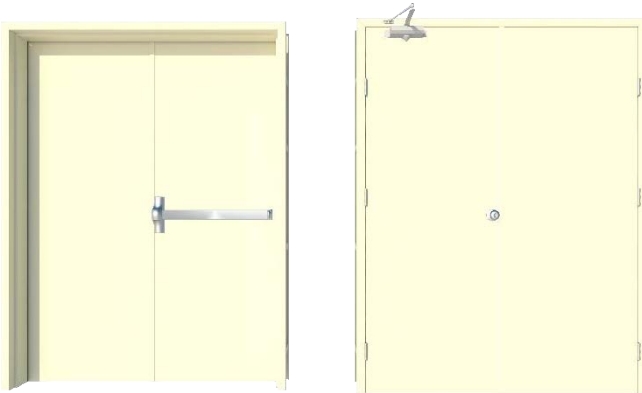
ASTM Test Method A754/A754M (G90 (0.90 oz/ft²) = 2275
(275 g/m²)) triple spot test (TST) average minimum of - 0.05
to 0.25 ounces

Steel Double Door

Fire-rated hollow metal doors



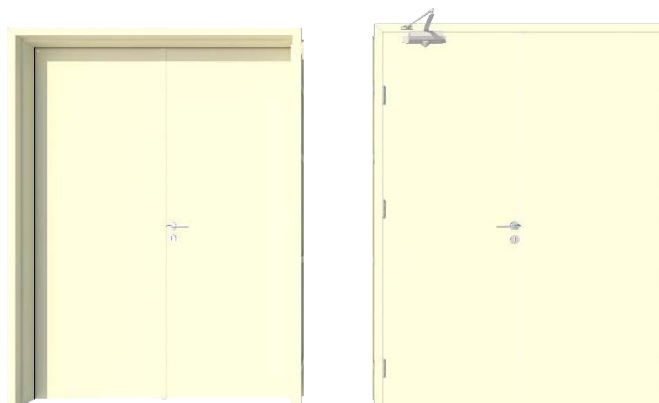
Double Exit Steel Door



Double Push Pull Steel Door



Double Installation Steel Door



FIRE-RATED HOLLOW METAL LEAF UP TO 4 HOURS

MATERIAL:

ASTM Test Method A754/A754M (G90 (0.90 oz/ft²) = Z275 (275 g/m²)) triple spot test (TST) average minimum of - 0.05 to 0.25 ounces

FACE SHEET:

18 Gauge = 1.214mm to 16 Gauge = 1.519mm (G90 / Z275).

DOOR EDGES:

profiles: Square Edge – edge of door which is 90° to the face. Beveled Edge – edge of a door

which is not at a 90° angle to the face of the door.

Internal Door Construction (Core)

MATERIAL:

Intumescent Honeycomb Core / Polyurethane Core Non- animal adhesive treated according to international standards

/ British Standards Institute (BSI), the German Institute for Standardization (DIN), the American Society for Testing and Materials (ASTM) the International Standardization Organization (ISO). European Union: EN 13381-8 (Replaces national Standards in Europe) United Kingdom: BS 476-20/21 (Commonly referred to in EU, Middle and Far East)

United States: ASTM E119 (Equivalent to UL 263, referred to in Middle and Far East), UL 1709 (Test using the hydrocarbon fire curve)

Russia: VNIPO (Also used in former Soviet Union countries) Chile: NCh 1974 China: GB 14907/CNS 11728

South Korea: KS F2257 1,6,7 Taiwan: CNS 11728



FIRE-RATED HOLLOW METAL LEAF UP TO 4 HOURS MATERIAL:

ASTM Test Method A754/A754M (G90 (0.90 oz/ft²) = Z275 (275 g/m²)) triple spot test (TST) average minimum of - 0.05 to 0.25 ounces

FACE SHEET:

18 Gauge = 1.214mm to 16 Gauge = 1.519mm (G90 / Z275).

DOOR EDGES:

profiles: Square Edge – edge of door which is 90° to the face. Beveled Edge – edge of a door

which is not at a 90° angle to the face of the door.

Internal Door Construction (Core)

MATERIAL:

Intumescent Honeycomb Core / Polyurethane Core Non- animal adhesive treated according to international standards

/ British Standards Institute (BSI), the German Institute for Standardization (DIN), the American Society for Testing and Materials (ASTM) the International Standardization

Organization (ISO). European Union: EN 13381-8

(Replaces national Standards in Europe)

United Kingdom: BS 476-20/21 (Commonly referred to in EU, Middle and Far East)

United States: ASTM E119 (Equivalent to UL 263, referred to in Middle and Far East), UL 1709 (Test using the hydrocarbon fire curve)

Russia: VNIPO (Also used in former Soviet Union countries) Chile: NCh 1974 China: GB 14907/CNS 11728

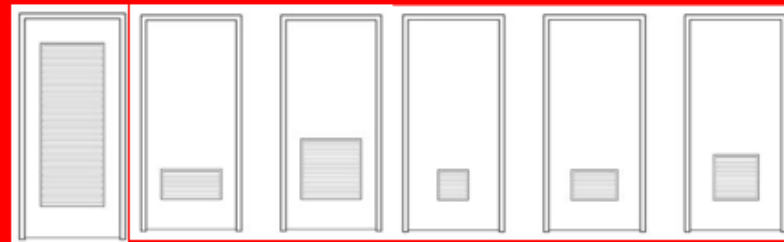
South Korea: KS F2257 1,6,7 Taiwan: CNS 11728

Louver Door

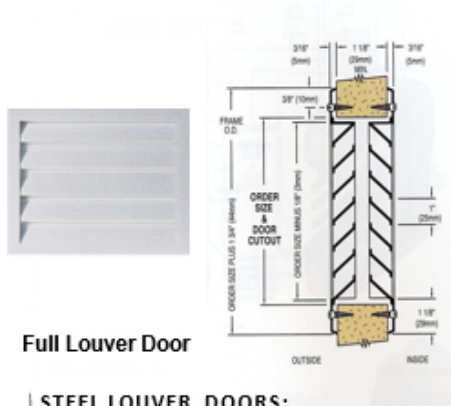
1-NFR Louver

2-Fusible link fire Louver

3-Motorized Fire Damper



1-NFR Louver



Full Louver Door

STEEL LOUVER DOORS:

Material:

16 GA (1.6mm) galvanized steel sheet

Installation:

Screws directly into each side of the door thru countersunk mounting holes.

Aesthetics:

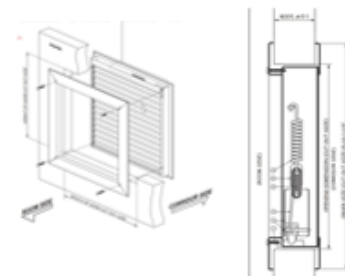
Tight mitered corners, no visible welds, and countersunk mounting holes.

2-Fusible link fire Louver

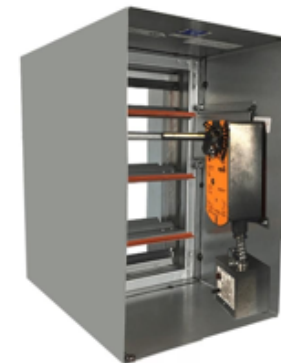


1. Before installing the FLLV Fusible Link Louvers into a fire rated door, make sure that the door cut out (order size) is accurate.
2. Position the corridor side of the louver to the door and while holding it place the room side panel against it.
3. Align the screw holes then screw the mounting screws. Tighten the screws just enough to hold the louvers in place. After placing all screws align and level the louvers on both the room and corridor side. Tighten screws once the louvers are leveled.

- ① Mounting Screws - #8 phillips head (3 @ 3/4" LG & 1 @ 3/8" LG)
Use the 3/8" screw in hole nearest the fuse link.
- ② Rocker Arm, Closing Bar and housing
- ③ "S" Hook - .080" Cadmium plated steel
- ④ Fusible link - Design temp. 165° F max
- ⑤ Heat opening - 1/2" x 1"
- ⑥ Tension spring - 3" LG x 1/2" dia x .063" thick, Cadmium plated steel



3-Motorized Fire Damper



Motorized Fire Damper

Frame: High quality galvanized Iron Sheet of 1.6mm thickness
Blades: Single skin roll formed from high quality steel sheet of thickness 16 gauge.

Actuator: Fast acting, two position Honeywell actuator

TRD: Belimo make TRD, 165° F temperature rating.

Jamb Seal: Stainless Steel

SPECIFICATIONS

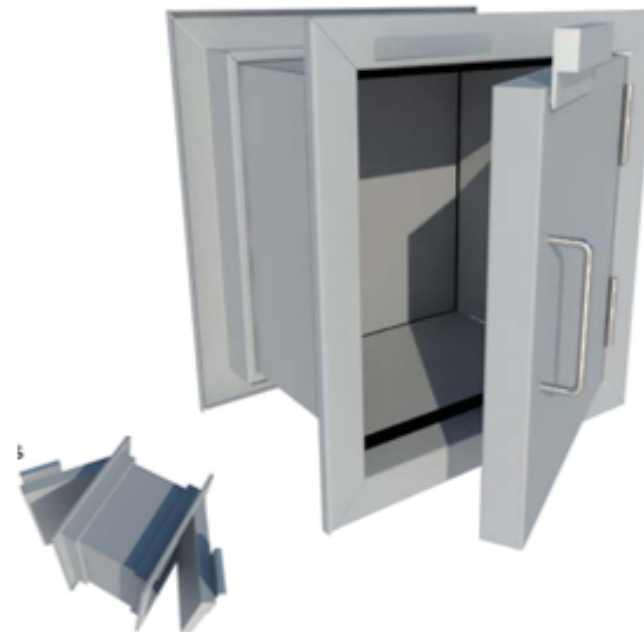
The Jada access door designed for wall and ceiling applications, this fire-rated insulated access door is UL listed. Designed to assist in reducing heat transfer in the event of a fire.

FIRE-RATED HOLLOW METAL LEAF UP TO 4 HOURS

Pass Box

Main Features

- Mechanical interlock is reliable, maintenance-free, fail safe and maintains cleanroom integrity by preventing both doors from being opened at the same time.
- All Jada products are manufactured for the most demanding controlled environment applications.
- All components are designed for maximum chemical resistance and enhanced durability for a long service life.
- The main body of the pass box is constructed of industrial-grade stainless steel 304.



Medical Doors

A wide range of medical doors to fit all the hospital uses, such as patient rooms, surgical operating rooms ,X-ray Doors, medical analysis laboratories, health isolation rooms and all the necessary hospital products such as Doors and Partitions



Stainless Steel

Grade 304 is the standard "18/8" stainless; it is the most versatile and most widely used stainless steel, available in a wider range of products, forms and finishes than any other.

It has excellent forming and welding characteristics.

The balanced austenitic structure of Grade 304 enables it to be severely deep drawn without intermediate annealing, which has made this grade dominant in the manufacture of drawn stainless parts such as Doors.

GMP "GOOD MANUFACTURING PRACTICES" Doors & Cleanroom Doors

strict requirements for pharmaceutical industry.
Our GMP doors do not carry bacteria and are easy to clean with seamless structure.

We are enlisted as one of the foremost Cleanroom doors manufacturers, exporters and suppliers based in Jordan. The Cleanroom doors offered by us are highly praised in the markets. These doors can be tailored made to suit the varied requirements of the esteemed clients. Available in different specifications, Cleanroom doors are widely acknowledged by the customers

ASTM A240/A240M

FACE SHEET:

18 Gauge = 1.214mm to 16 Gauge = 1.519mm (SS304).



FRAMES:

16 Gauge = 1.519mm to 13 Gauge = 2.278mm (SS304)



Type	GMP Doors
Thickness	40-45-50mm
Surface Finishing	Finished
Door Material	Metal, Stainless Steel
Brand Name	GMP
Material	Made Using Galvanized Steel
Product Type	Clean Room Doors
Sizes	Various
Height	Various

Wooden Doors

All Blankfort doors come with both FSC® and BM Trada Q Mark certification.
The available fire resistance ratings are 30, 60, 90, 120 minutes



HALSPAN

FR60min



SIZ55mm

FR30min



SIZ45mm

FR120min



SIZ60mm

FR90min



SIZ65mm



Leaf Wooden doors Wood Halspan NFR and FD 30-120

Halspan offers a comprehensive range of quality internal and exterior fire and non-fire door blanks and cores tested to international standards. Rated at 120 minutes' fire resistance.



Steel Frame

FACE SHEET: (G90 / Z275)

16 Gauge = 1.519mm to

13 Gauge = 2.278mm

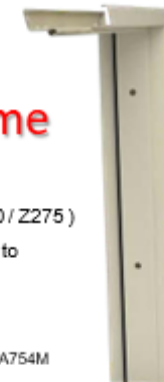
MATERIAL:

ASTM Test Method A754/A754M

(G90 (0.90 oz/ft²) = Z275

(275 g/m²)) triple spot test

(TST) average minimum of - 0.05 to 0.25 ounces



Anti Bullet Doors

Jada Anti Bullet Door meets the requirements and standards of:

- EN 1522/1523 standard
- Level FB6+++
- (special type 7.62x39mmAPI Bz, 695-715 m/s)



Jada FB4

Jada FB6+

Jada FB6+++



1st Test Sample
(B.D.A.R.A. Type 1)

Protection Levels:
FB2
FB2+
FB4



2nd Test Sample
(B.D.A.R.A. Type 2)

Protection Levels:
FB4+
FB5
FB6
FB6+



3rd Test Sample
(B.D.A.R.A. Type 3)

Protection Levels:
FB6++
FB6+++

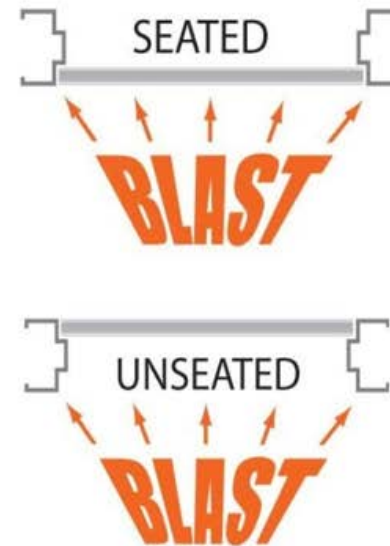
FB1	Rifle		22 LR	
FB2	Automatic pistol		9 mm Luger	
FB3	Hand gun		357 Magnum	
FB4	Hand gun		44 Rem. Magnum	
*AK47	Kalachnikov		7.62 x 39	
FB5	Assault rifle		5.56 x 45	
FB6	Rifle		7.62 x 51	
FB7	Rifle		7.62 x 51	

Blast Resistance Doors

ASTM F2247, ASTM F2927 and ASTM F1642 are commonly specified test methods for blast doors.

UFC 4-010-01 is one of the primary specifications required for all Department of Defense related construction.

ASCE (Design of Blast Resistant Buildings in Petrochemical Facilities) and PIP STC01018 are primarily used for petrochemical and offshore facilities.



Security Doors

A. Door construction for (Jada company) Model 2A Full Flush Doors meet

requirements of:

- HMMA865
- ASTM E90
- ASTM E413
- ANSI/SDI A250.10&A250.11

B. Hardware preparations and reinforcements are in accordance with ANSI A250.6-2003.

✓ Locations are in accordance with ANSI/DHI A115 unless otherwise noted.





Pivoting doors system

Our Pivot Doors are the perfect example of a statement piece for a home. This grand structure offers stunning views while operating effortlessly on a concealed pivot hinge, providing a large functional opening. Equipped with multipoint locking systems and thermally broken for superior energy efficiency.



Finishing Steel

- A. Powder Coating
- B. Stainless steel SS 304
- C. Italian Steel

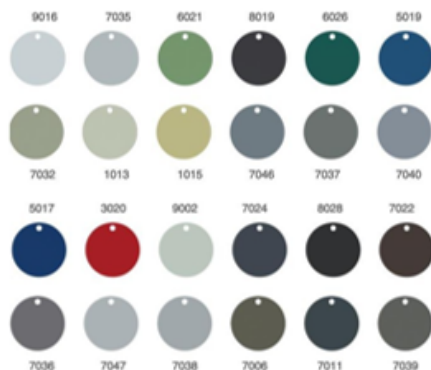
Powder Coating

FINISHING:
Epoxy Polyester

DESCRIPTION:
Thermoset Powder Epoxy and Polyester binders, pigments, extenders and additives.

COLOR RANGE:
All range of RAL colors or customer's special colors.

*APPLIED FOR 120 MICRON FILM COATED ON COLD ROLLED STEEL AND CURED FOR 20 MIN AT 220° C



Stainless steel SS 304

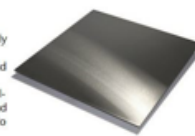
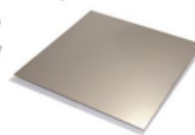
We offer products in 304 (available in three finishes: #2B, #4 and #8) and 316 stainless sheet products.

No. 2B Finish (Standard dull) is a bright cold rolled finish commonly produced in the same manner as No. 2D, except that the final light cold rolling pass is done using polished rolls. This produces a more reflective finish that resembles a cloudy mirror. Finish reflectivity can vary from manufacturer-to-manufacturer and coil-to-coil with some coils looking quite mirror-like and others being fairly dull. No. 2B is a general purpose cold rolled finish commonly used for all but exceptionally difficult deep drawing applications. It is more readily polished to high luster than a No. 1 or No. 2D finish.

Sample Applications: Bakeware, Chemical plant equipment, Dye house equipment, Flatware, Laundry and dry cleaning, Paper mill equipment, Pharmaceutical equipment, Plumbing fixtures, Refrigeration, Sewage treatment, Sheet metal products, Small tanks, Solar collector panels, Vacuum drum dryers, Waste fuel pool liners, Wheel covers

No. 4 Finish (Brushed Finish) is characterized by short, parallel polishing lines, which extend uniformly along the length of the coil. It is obtained by mechanically polishing a No. 3 finish with gradually finer abrasives. Depending on the requirements of the application, the final finish can be anywhere between 120 and 320 grit. Higher grit numbers produce finer polishing lines and more reflective finishes. The surface roughness is typically Ra 25 micro-inches or less. This general-purpose finish is widely used for restaurant and kitchen equipment, store fronts and food processing and dairy equipment. If a fabricator needs to blend in welds or do other refinishing, the resulting polishing lines are usually longer than on product polished by a producer or toll-polishing house.

Sample Applications: Appliances, Architectural wall panels, Beverage equipment, Boat fittings, Bus shelters, Clean rooms, Column covers, Dairy equipment, Elevator doors and interiors, Escalator trim, Food processing equipment, Furniture, Highway tank trailers, Hospital surfaces and equipment, Instrument or control panels, Kitchen equipment, Luggage handling equipment, Mass transit equipment, Restaurant equipment, Sinks, Sterilizers, Store fronts, Water fountains



Italian Steel



Dark Brown
Wood



Brown Wood

Finishing Wooden

- A. Wood Paint
- B. Formica Textures

HPL Wood Textures

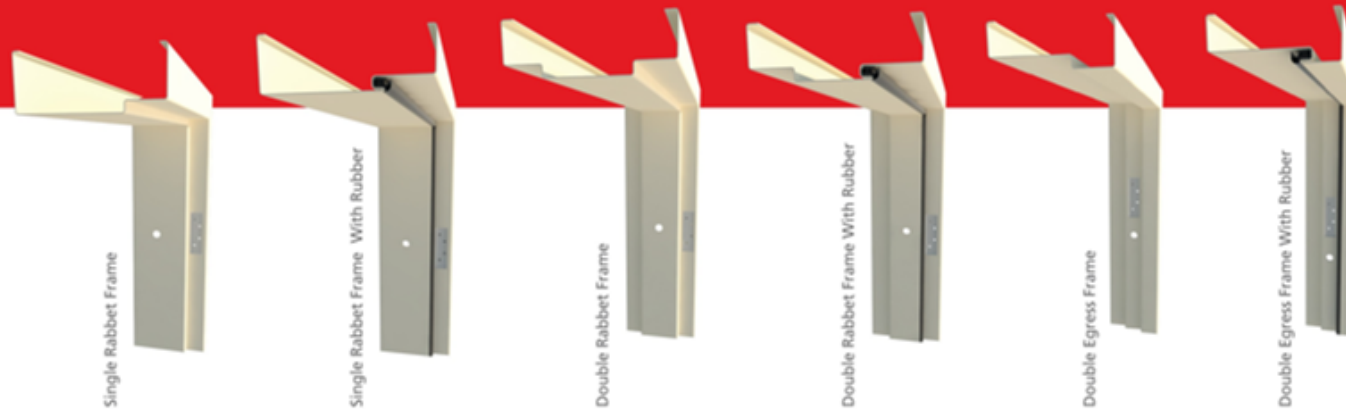
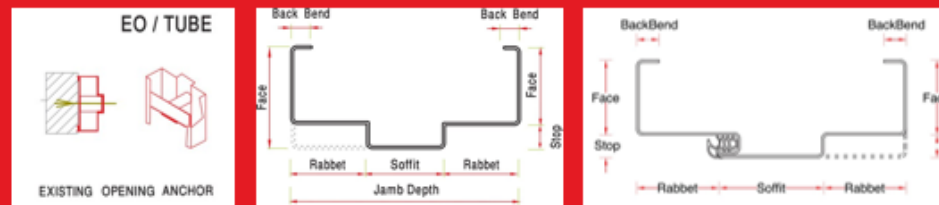


and more

Wood Paint



STEEL FRAMES



G90 Z275

FACE SHEET:

16 Gauge = 1.519mm to 13 Gauge = 2.278mm (G90 / Z275)

MATERIAL:

ASTM Test Method A754/A754M (G90 (0.90 oz/ft²) = Z275 (275 g/m²)) triple spot test (TST) average minimum of - 0.05 to 0.25 ounces

SS304

FACE SHEET:

16 Gauge = 1.519mm to 13 Gauge = 2.278mm (SS304)

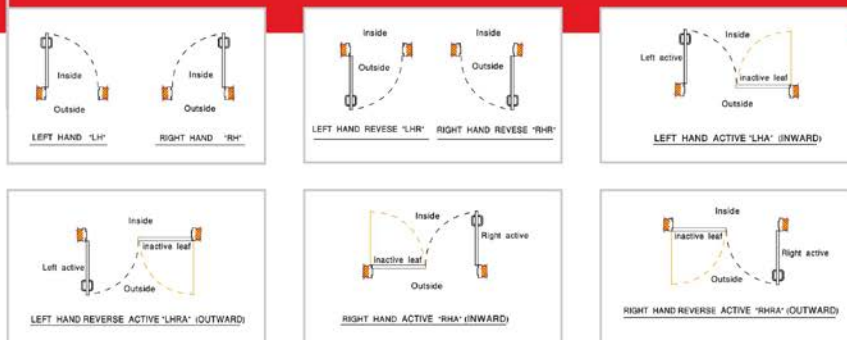
MATERIAL:

ASTMA240/A240M



STEEL DOORS BASICS

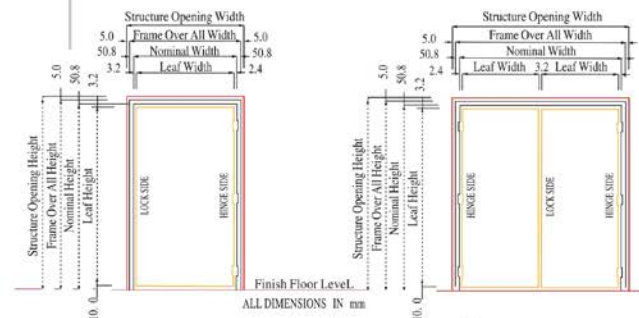
• Doors Hanging Legend



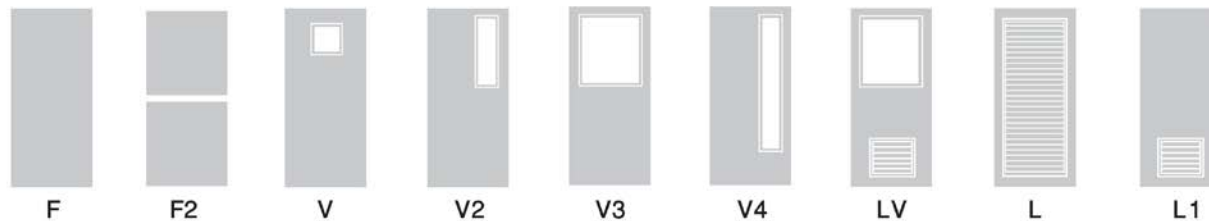
• Hardware Locations



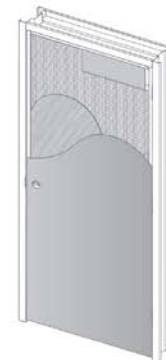
• Frame Door Clearance



• Doors Available Designs



• Steel Door Layers



THE TESTS

- Our Passed Doors.



- UL Tests.



- EXOVA Tests.

CERTIFICATIONS



OUR PROJECTS

HOTELS AND MALLS:

- ABDALI MALL
- SAINT REGIS HOTEL
- AVENUE (SWEFIEH) MALL
- ALBARKA MALL
- ABDOUN ATRIUM
- SARAYA AL AQABA
- CITY MALL
- CROWN PLAZA
- MARSA ZAYED
- DAYS INN HOTEL
- DEAD SEA SPA HOTEL
- EMAAR TOWER

- FOUR SEASONS HOTEL
- GALLERIA MALL
- HAYAT AMMAN HOTEL
- JALLAD MUSEUM
- KEMPINSKI HOTEL
- MERIDIAN HOTEL
- ROTANA HOTEL
- W HOTEL
- ROYAL HOTEL
- SAMARA DEAD SEA MALL
- SAMARA DEAD SEA RESORT
BY EMAAR PROPERTIES
- SHERATON HOTEL

- TAJ MALL
- AYLA AQABA
RESORT
- VERTEX TOWER
- ZARA COMMERCIAL
TOWER
- INTERCONTINENTAL HOTEL

BANKS:

- ARAB BANK
- DUBAI ISLAMIC BANK
- AUDI BANK
- AJIB BANK

- AHLI BANK
- CENTRAL BANK OF JORDAN
- ETIHAD BANK
- HSBC BANK
- INVEST BANK
- ISLAMIC ARAB BANK
- JORDAN AHLI BANK
- JORDAN BANK
- JORDAN NATIONAL BANK
- NATIONAL BANK OF KWA IT
- RAJHI BANK
- DUBAI ISLAMIC BANK
- ARAB ISLAMIC BANK



- SOCIETE GENERALE BANK
- UNITED INSURANCE COMPANY HEADQUARTERS
- ARAB GERMAN INSURANCE COMPANY HEADQUARTERS

SCHOOLS AND UNIVERSITIES:

- GERMAN JORDANIAN UNIVERSITY
- AUTISM ACADEMY OF JORDAN
- ARAB OPEN UNIVERSITY
- CAMBRIDGE SCHOOL
- CHOUFAT SCHOOL
- KING'S ACADEMY

- FRANCISCAN SCHOOL
- QIMEH SCHOOL
- MASHAHEER SCHOOL
- MASHREK SCHOOL
- PETRA UNIVERSITY
- JADARA UNIVERSITY
- MIDDLE EAST UNIVERSITY
- ROYAL MEDICAL UNIVERSITY
- TAYBEH SCHOOL
- USAID SCHOOLS
- GERMAN JORDANIAN UNIVERSITY
- PETRA UNIVERSITY
- AMERICAN SCHOOLS

EMBASSIES:

- AMERICAN EMBASSY
- BRITISH EMBASSY
- CYPRUS EMBASSY
- FRENCH EMBASSY
- SAUDI EMBASSY

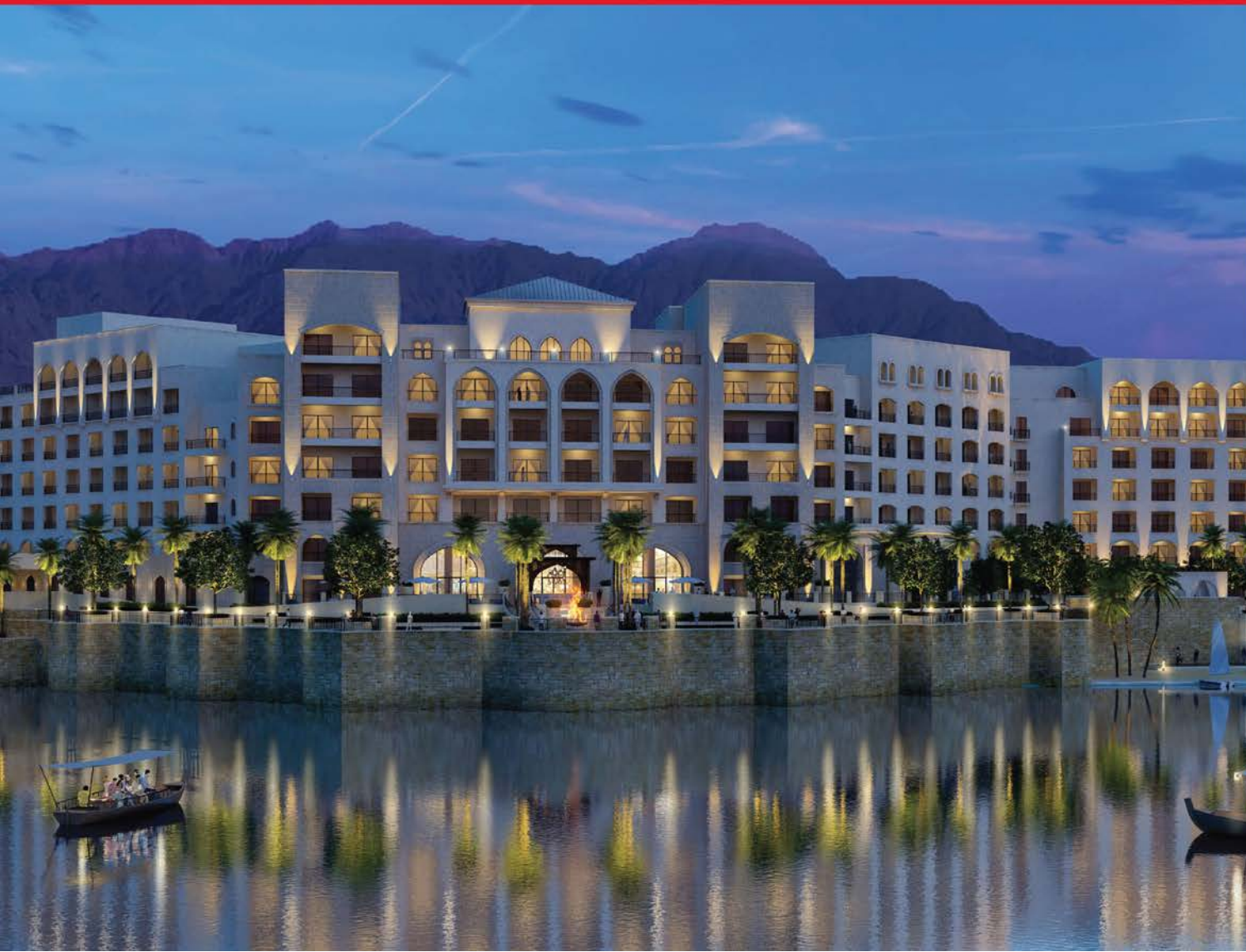
SUB-STATION:

- ALSAMRA WASTE WATER TREATMENT
- TOTAL GAS STATIONS
- TAFILEH SUB-STATION
- GULF SUB STATION

HOSPITALS:

- ARAB MEDICAL CENTER
- AMMAN SURGICAL HOSPITAL
- KING HUSSEIN CANCER CENTER
- ISTIKLAL HOSPITAL
- FARAH HOSPITAL
- ABD AL HADI EYE HOSPITAL
- BASHIR HOSPITAL
- DAR ALDAWA'A GROUP
- ESRA'A HOSPITAL
- HANAN HOSPITAL
- HIKMEH PHARMACEUTICALS
- SPECIALTY HOSPITAL

- (HEET, HADITHA, ALQA'EM HOSPITALS)- IRAQ
- IBN AL HAITHAM HOSPITAL
- JORDAN HOSPITAL
- JORDAN ITALIAN HOSPITAL
- JORDANIAN ROYAL MEDICAL SERVICES
- KAHLDI MEDICAL CENTER
- KARAK HOSPITAL
- KING ABDULLAH HOSPITAL
- KING HUSSEIN HOSPITAL
- KING TALAL HOSPITAL , AL MAFRAQ





F I R S T L I N E O F D E F E N S E



Tel.: +962 6 4169216, +962 6 5866161
Fax: +962 6 4169217, +962 6 5866168
Mobile: +962 79 5535930, +962 79 5535867
P.O. Box: 143386- Amman 11814 Jordan
Email: info@jadadoors.com
www.jadacompany.com