

**unipol**

**aluminium  
windows  
doors  
facades**

SINCE 1976

---






The factory was established in 1976 as one of the First Aluminum fabrication shop to be built in the Eastern Province of Saudi Arabia located at Anak – Umm ALHammam Road.

Ever since the factory was established over 40 years ago, the Quality and Performance was and will always be the highest priority that's being achieved by utilizing highly skilled work force and latest machinery in the market. Since the founding of Alzuhour, it has gone through various stages of development which ranges from using commercial profile to having its own complete Aluminum system.

Now, Alzuhour has one of the highest performance systems in the market. Recently, Thermal Break System was introduced which made Alzuhour at the front lead of advancement since it is the only factory in the area who has private thermal break system. The System has proven to pass all International Standards in terms of water, air and sound tightness.

SINCE 1976



<b>Tilt &amp; Turn</b> (Thermally Broken) . . . . .	<b>7</b>
<b>Tilt &amp; Turn</b> (Non Thermally Broken). . . . .	<b>11</b>
<b>Concealed Sash</b> . . . . .	<b>15</b>
<b>Doors</b> . . . . .	<b>19</b>
<b>Curtain Wall</b> . . . . .	<b>23</b>
<b>Lift &amp; Slide</b> . . . . .	<b>27</b>





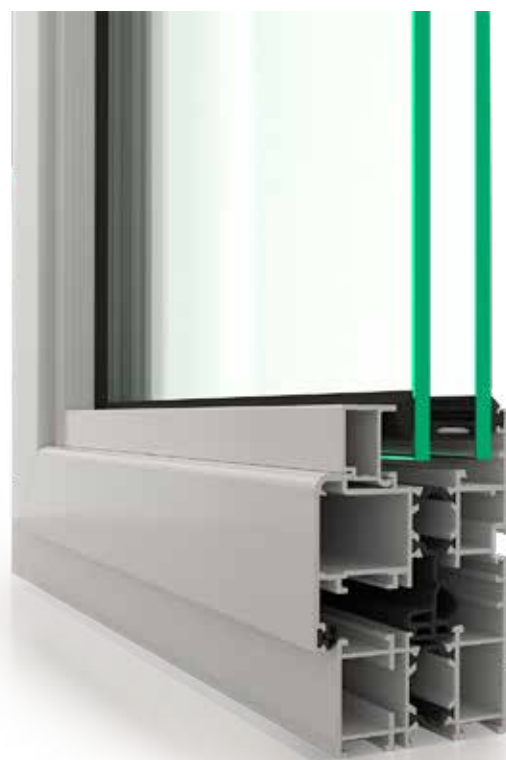
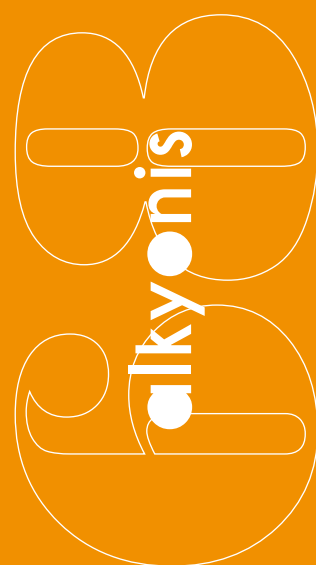


# Tilt and Turn

## Thermally Broken

A robust long lasting heavy duty casement system, which at the same time looks elegant due to the small size of the profiles in reference to the size of openings that can be implemented. The pro-

files' thickness (2,2mm) along with the provided glass configuration (8-20-6) result at a high quality end products.

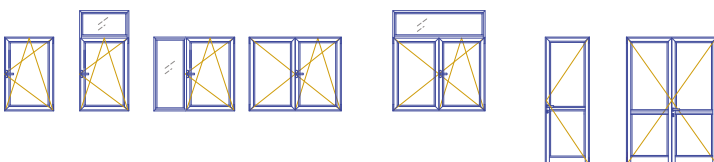




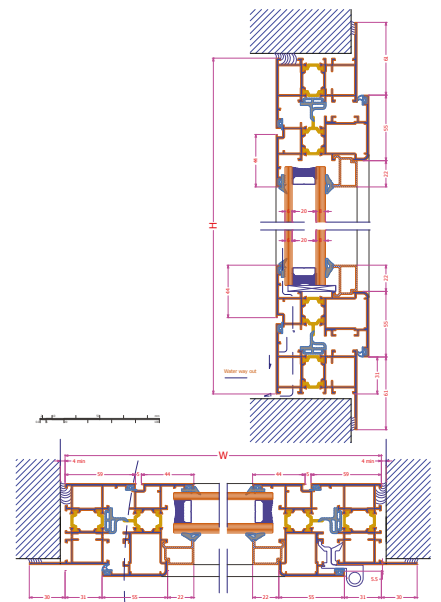


Alkyonis 68 is a 68mm frame depth casement system with 59mm height of frame. It is a thermally broken system using 18mm polyamide strips. It is designed to be used as a two or three gasket system so as comply with diverse specifications. The adapt of the "Euro" groove standard

chamber, offers combatibility with a large variety of hardwares and accessories that can be used. It meets all the known typologies (fixed screens, single or double leaf openings, residential balcony and entrance doors).



Thermo





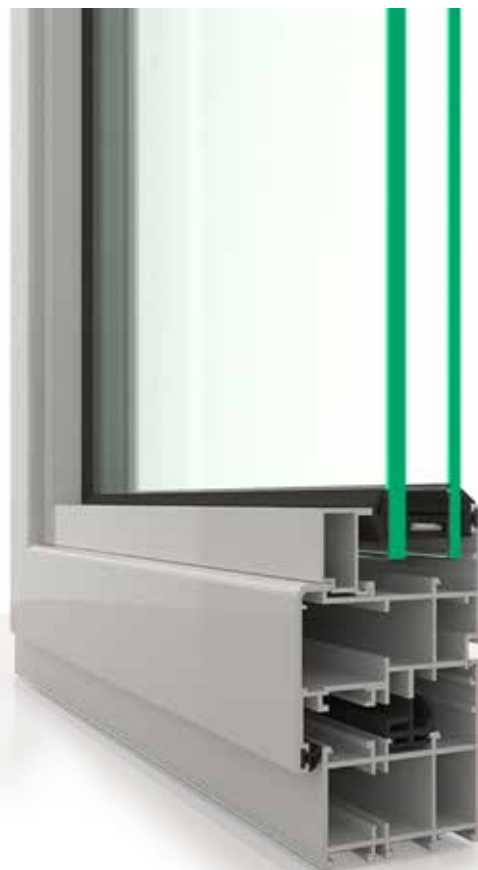
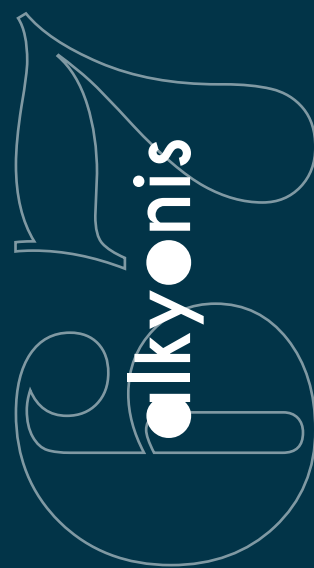
# Tilt and Turn

Non Thermally Broken

A robust long lasting heavy duty casement system, which at the same time looks elegant due to the small size of the profiles in reference to the size of openings that can

implement. The profiles' thickness (2,2mm) along with the provided glass configuration (8-20-6) result at a high quality end products.

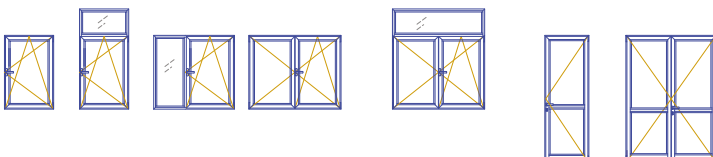




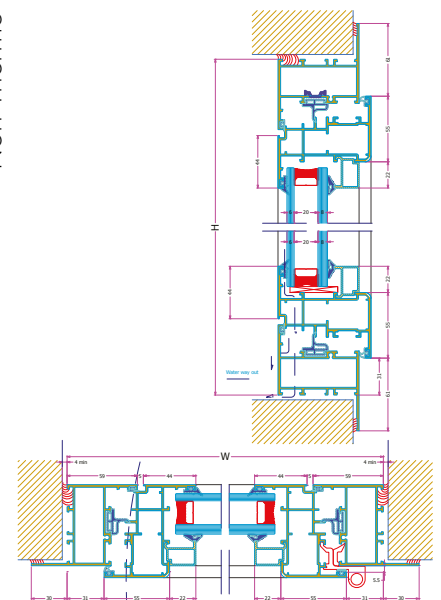


Alkyonis 67 is a 68mm frame depth casement system with 59mm height of frame. It is a non thermally broken system. It is designed to be used as a two or three gasket system so as comply with diverse specifications. The adapt of the "Euro"

groove standard chamber, offers compatibility with a large variety of hardware and accessories that can be used. It meets all the known typologies (fixed screens, single or double leaf openings, residential balcony and entrance doors).



Non Thermo









# Concealed Sash

A robust long lasting implement. The profiles' heavy duty casement system, which at the same time looks elegant due to the small size of the profiles in reference to the size of openings that can

implement. The profiles' thickness (2,2mm) along with the provided glass configuration (8-20-6) result at a high quality end products.

68/67  
alkyonis

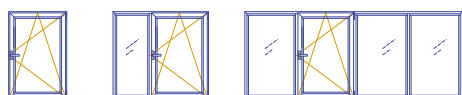


alkyonis

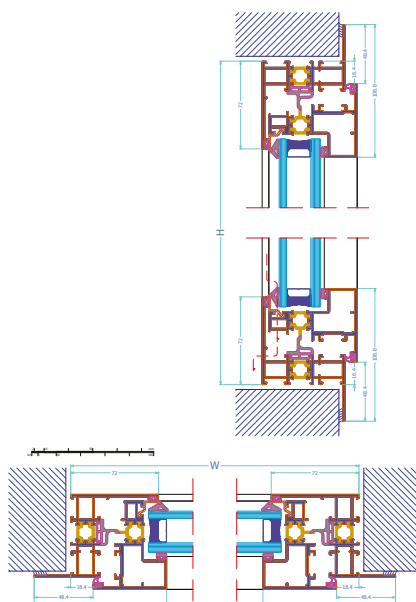




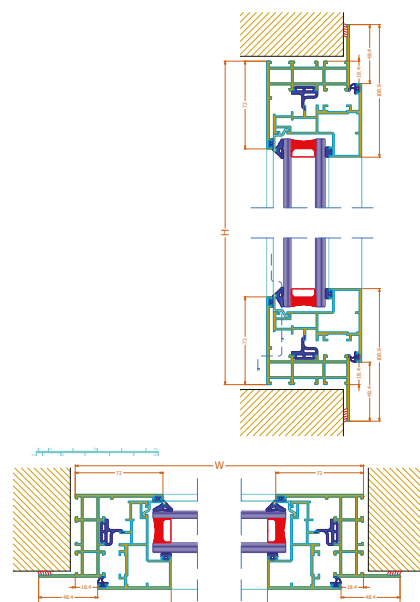
both thermally broken or non thermally broken profiles. The adapt of the "Euro" groove standard chamber, offers compatibility with a large variety of hardwares and accessories that can be used.



Thermo



Non Thermo









alzuhour

# Doors

A robust long lasting heavy duty door system, providing increased safety. The profiles' thickness (2,2mm) along with the

provided panel (4mm) or glass configuration (8-20-6) result at a high quality end products.

6867  
alkyonis



alkyonis

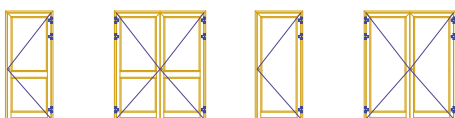




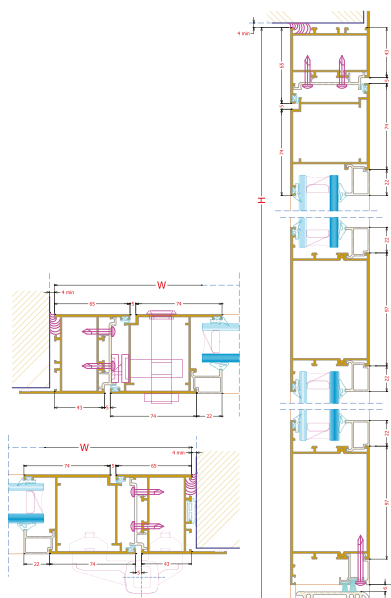


Alkyonis 68/67 commercial door system, can implement both flat panel or glazed co-planar doors, proper also for residential entrance doors. There is the choice of single or double leaf doors that are fully compatible with A68 and A67 casement

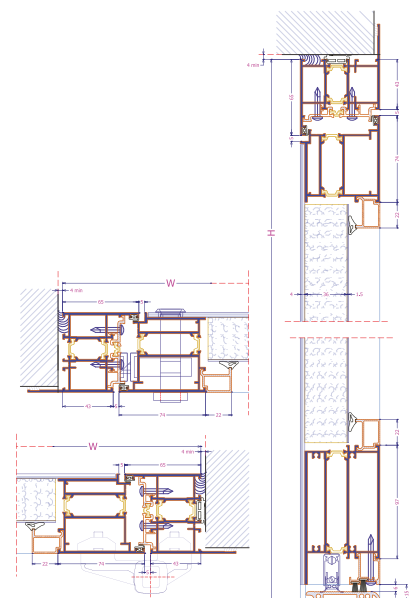
systems providing both thermally broken or non thermally broken profiles. There is a vast variety of locks and hinges (bare or concealed) that can be used, giving the choice of anti burglar performance.



Non Thermo



Thermo





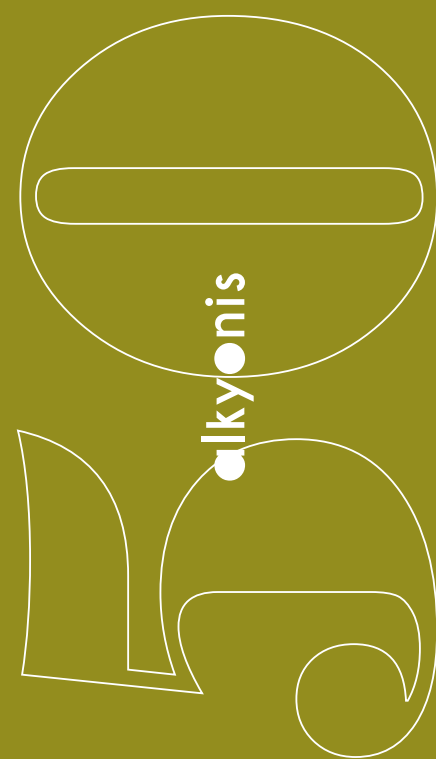
# Curtain Wall

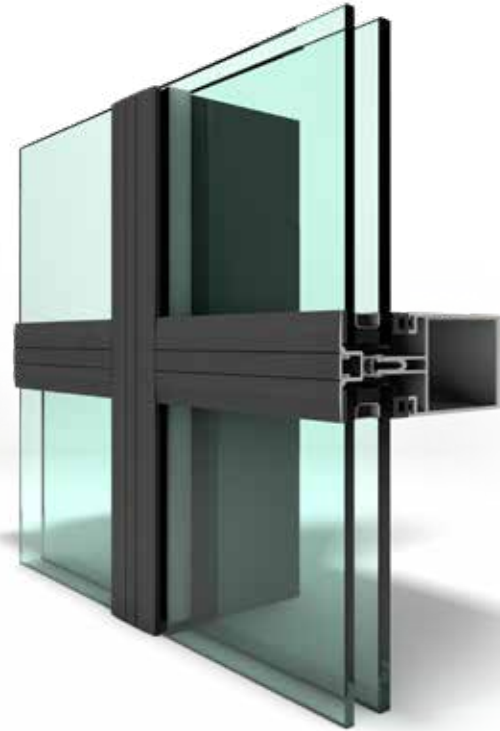
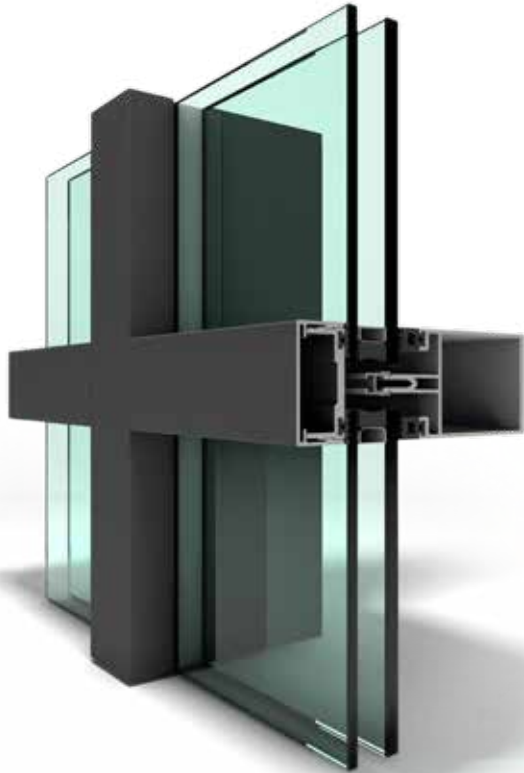
A typical curtain wall system which can be used to materialize extensive glass screens, providing an impressive and contemporary appearance. While it performs as an

outer wall, at the same time it allows for ample light in the interior. Combined with any other system for doors, slidings etc makes it ideal for any residential or commercial use.

50 alkyonis

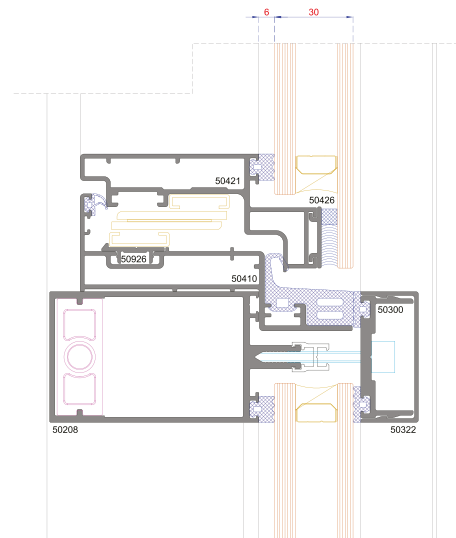
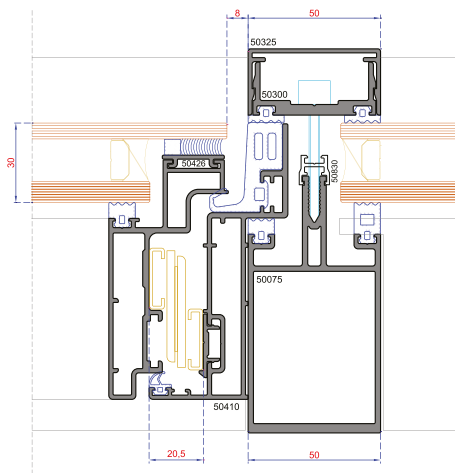






Alkyonis 50, is an 50mm mullion/transom width stick facade system with pressure plate, rubber joint or 2-sided appearance. It is designed to accept typical 30mm (8-16-6) double glazing. All Typical curtain walls constructions with combined outwards projected zero line parts can be

materialized as well as canopies and skylights. For Decorative reasons there are the typical pressure plates and caps as well as pressure plate that gives the appearance of a semi structural curtain wall (with a groove joint in the middle) or a pseudo structural appearance.







# Lift & Slide

A robust long lasting heavy duty sliding system, which at the same time looks elegant due to the possibility of implementing wide openings especially when combined with narrow

interlocks. The profiles' thickness (2,2mm) along with the provided glass configuration (8-20-6) result at a high quality end products.



alkeyonis



alkyonis

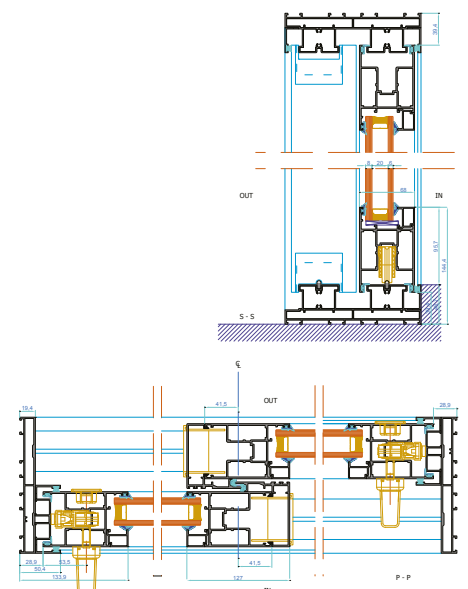
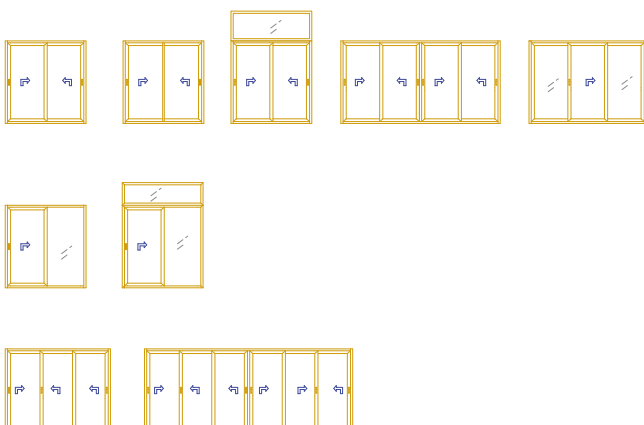






Alkyonis 84 is a 68mm sash depth sliding system with interlock visible surface 70 or 127mm. The height of the rail is 49mm. It is designed to accept lift & slide hardware up to 300kg, but it can also be used

as a conventional sliding system. It meets all the known typologies (monorail, double/triple rail, combined with fly screens, as well as with fixed screens).





SINCE 1976

---



Alzuhour Aluminum Factory

4192 Al-Imam Zayn Al Abidin – Al-Anwar, Unit NO.:1 | Anak 32651 – 6544 | Saudi Arabia

M.: +966 50 5811583

info@alzuhour.com.sa | [www.alzuhour.com.sa](http://www.alzuhour.com.sa)